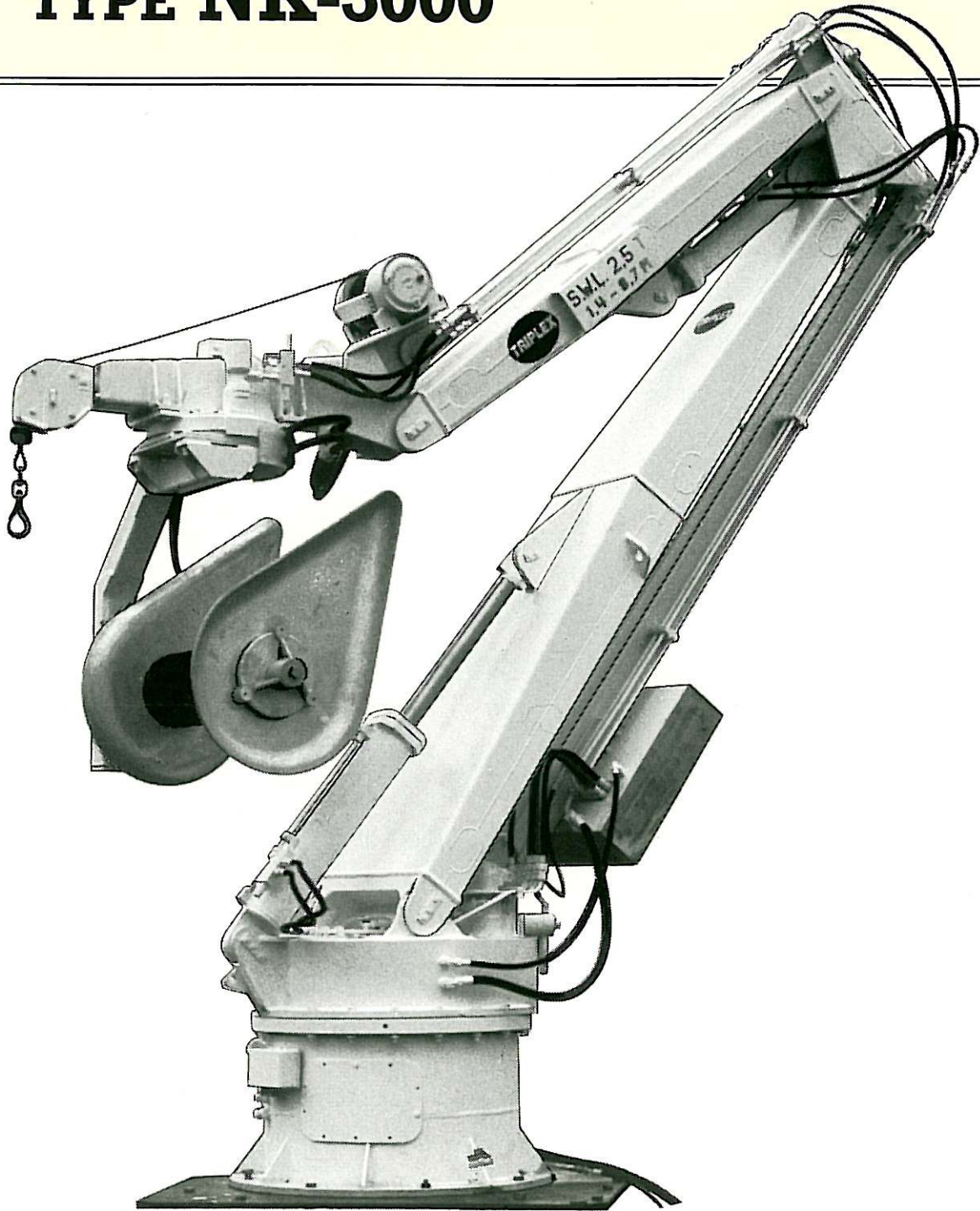


TRIPLEX

NET CRANE

TYPE NK-3000



**SUITABLE FOR BOTH SEINING AND
TRAWLING VESSELS**



TRIPLEX AS

TRIPLEX NET CRANE TYPE NK-3000

— is able to stack even the largest net with only 3-4 men needed in the bin.

The special design of the TRIPLEX NET CRANE type NK-3000 makes it suitable for use on combination vessels, ie. purse seining/trawling.

The primary function of the net crane is net stacking, but it can also be fitted with a winch and used as a conventional crane for handling trawl gear, etc.

The net crane is designed with both horizontal and vertical parallel arms. These ensure that the Transport Roller can always be held in a horizontal position.

All movements of the crane are particularly smooth as they are controlled by means of proportional valves.

The broad construction of the linkages ensures the stability of the crane especially when carrying a load with arms fully extended in a sideways direction.

The Net Crane can be manoeuvred over the whole area of the bin enabling the net to be stacked in any preferred way. The crew need only take care of the cork line and the lead line.

TRIPLEX NET CRANE TYPE NK-3000

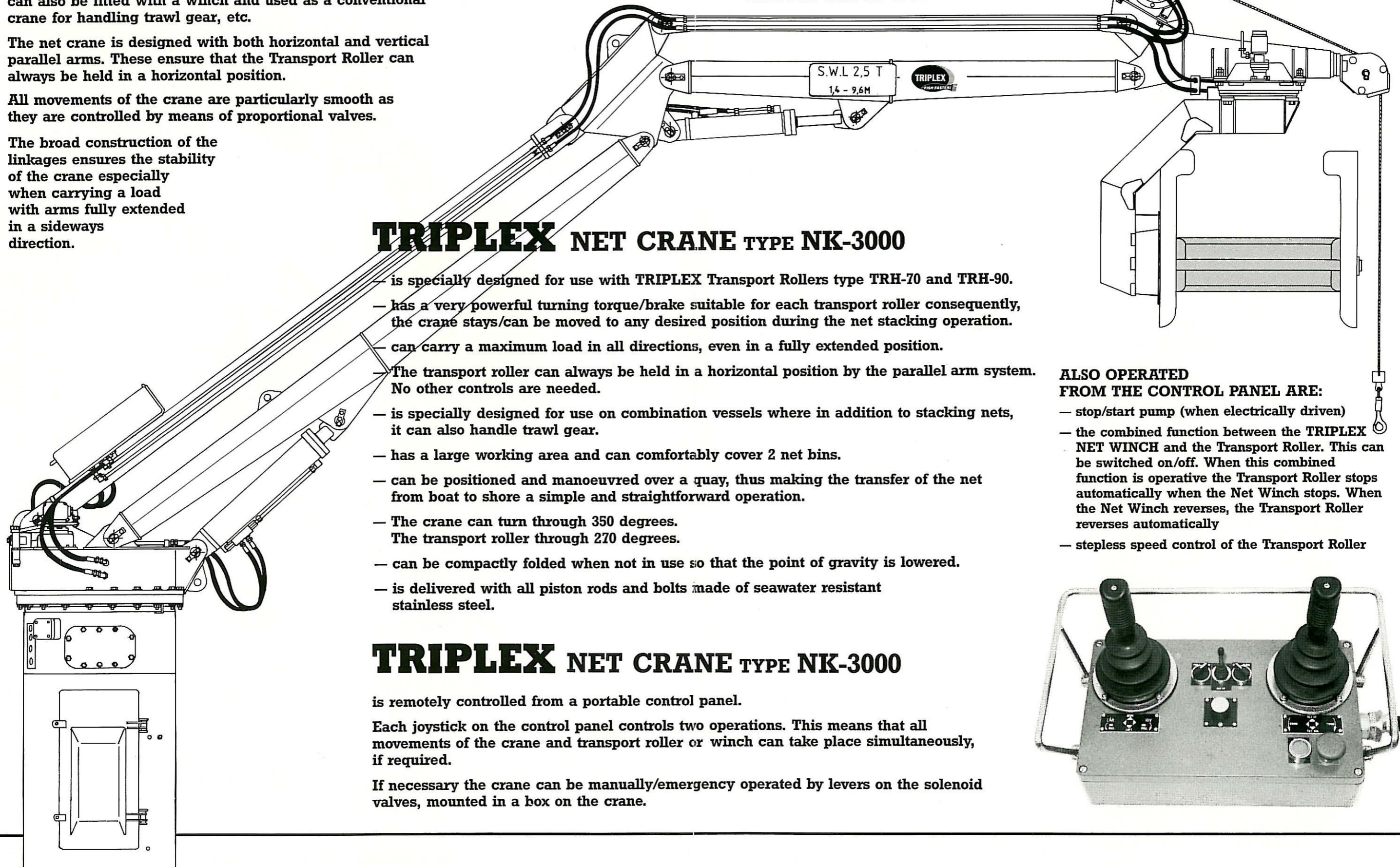
- is specially designed for use with TRIPLEX Transport Rollers type TRH-70 and TRH-90.
- has a very powerful turning torque/brake suitable for each transport roller consequently, the crane stays/can be moved to any desired position during the net stacking operation.
- can carry a maximum load in all directions, even in a fully extended position.
- The transport roller can always be held in a horizontal position by the parallel arm system. No other controls are needed.
- is specially designed for use on combination vessels where in addition to stacking nets, it can also handle trawl gear.
- has a large working area and can comfortably cover 2 net bins.
- can be positioned and manoeuvred over a quay, thus making the transfer of the net from boat to shore a simple and straightforward operation.
- The crane can turn through 350 degrees. The transport roller through 270 degrees.
- can be compactly folded when not in use so that the point of gravity is lowered.
- is delivered with all piston rods and bolts made of seawater resistant stainless steel.

TRIPLEX NET CRANE TYPE NK-3000

is remotely controlled from a portable control panel.

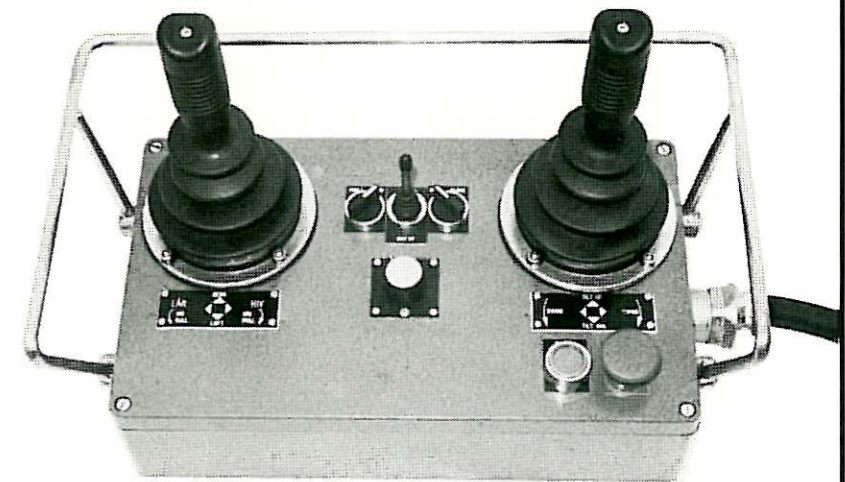
Each joystick on the control panel controls two operations. This means that all movements of the crane and transport roller or winch can take place simultaneously, if required.

If necessary the crane can be manually/emergency operated by levers on the solenoid valves, mounted in a box on the crane.



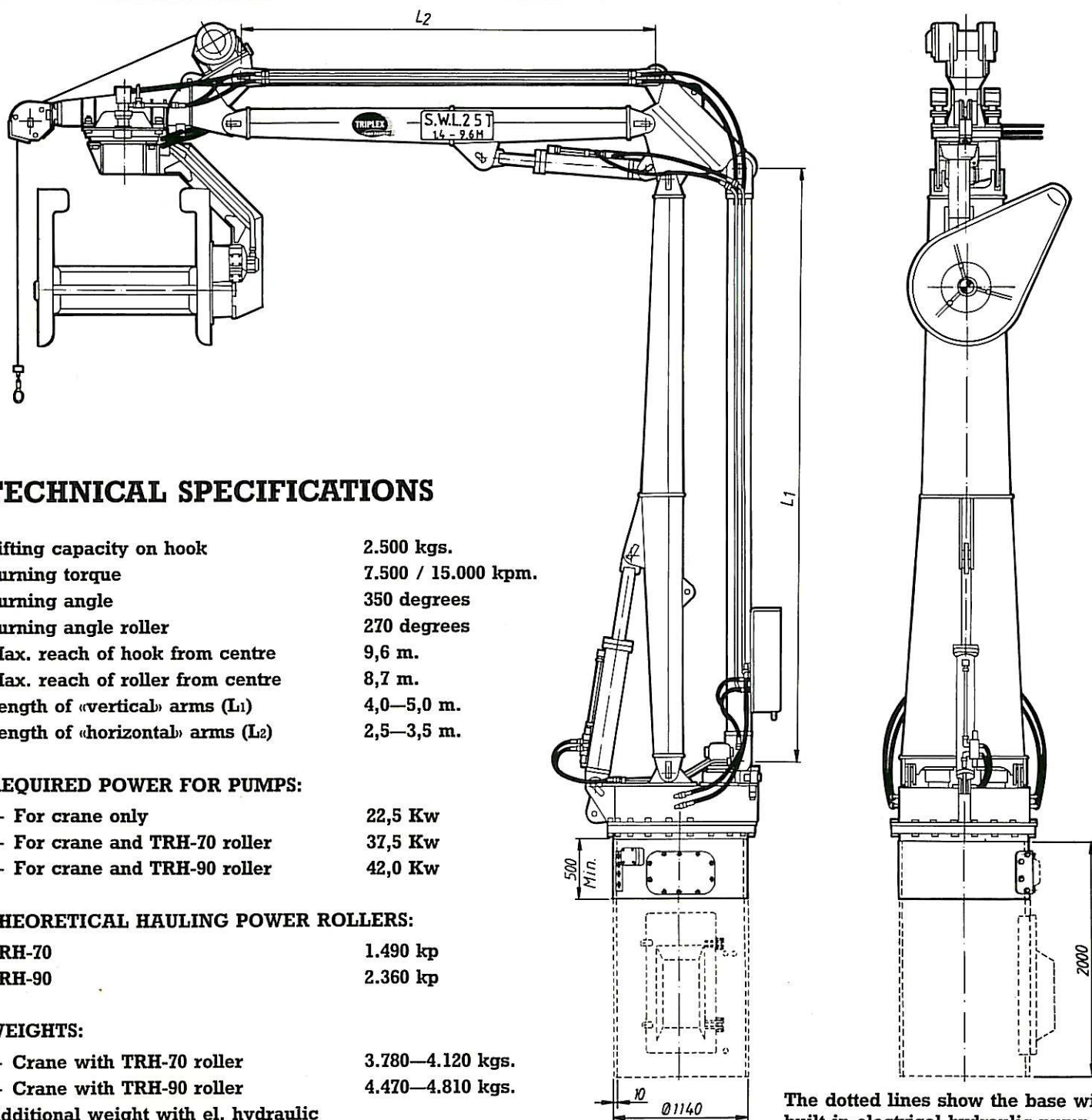
ALSO OPERATED FROM THE CONTROL PANEL ARE:

- stop/start pump (when electrically driven)
- the combined function between the TRIPLEX NET WINCH and the Transport Roller. This can be switched on/off. When this combined function is operative the Transport Roller stops automatically when the Net Winch stops. When the Net Winch reverses, the Transport Roller reverses automatically
- stepless speed control of the Transport Roller



TRIPLEX NET CRANE TYPE NK-3000

- can have both the length of the arms and the height of the base custom made to suit each individual vessel.
- is delivered ready prepared for the fitting of optional computer control. All the movements of the crane during net stacking can be programmed, thus releasing the operator to carry out other work.



TECHNICAL SPECIFICATIONS

Lifting capacity on hook	2.500 kgs.
Turning torque	7.500 / 15.000 kpm.
Turning angle	350 degrees
Turning angle roller	270 degrees
Max. reach of hook from centre	9,6 m.
Max. reach of roller from centre	8,7 m.
Length of «vertical» arms (L ₁)	4,0—5,0 m.
Length of «horizontal» arms (L ₂)	2,5—3,5 m.

REQUIRED POWER FOR PUMPS:

— For crane only	22,5 Kw
— For crane and TRH-70 roller	37,5 Kw
— For crane and TRH-90 roller	42,0 Kw

THEORETICAL HAULING POWER ROLLERS:

TRH-70	1.490 kp
TRH-90	2.360 kp

WEIGHTS:

— Crane with TRH-70 roller	3.780—4.120 kgs.
— Crane with TRH-90 roller	4.470—4.810 kgs.
Additional weight with el. hydraulic pump unit and tank built in the foundation	1.100 kgs.

The dotted lines show the base with built in electrical hydraulic pump unit and tank.



TRIPLEX AS

HENDA, N-6530 AVERØY, NORWAY
 Phone: (47) 71 51 39 00 • Fax: (47) 71 51 39 01
 E-mail: sales@triplex.no www.triplex.no